

Beaver

Crochet pattern



AMIFAN



Size of crochet hook

- Haaknaald 2,0 mm



Yarns

- 10 gram Katia Capri white or yellow
- 15 gram Katia Capri brown
- Left over from black and white for face



Materials

- Scissors;
- Fiberfill;
- Sewing needle;
- Stichmarker;
- Safety eyes 8 mm purple



- My patterns have a difficulty

- This pattern is:

Easy

Moderate

Difficult

Terminology (US)

chain [ch]
stitch [st]
magic ring
single crochet [sc]
half double crochet [hdc]
double crochet [dc]
increase [inc]
decrease [dec]
slip stitch [sl st]
* * = repeat what is between **
() = amount of sc in a round of row

Instructions.....	3
Head.....	3
Body.....	3
Leg front (2x)	4
Leg back (2x).....	4
Ears (2x)	4
Assembly	5
EYES AND NOSE.....	6
TAIL BEAVER	7
TAIL SQUIRREL.....	8

Thank you,

for downloading this pattern.

It is one off my best selling (free) patterns. I designed this beaver in 2014. And it is still cute.

With this pattern you can crochet a beaver as well a squirrel. The difference is in the colors, the facing and the tail. The beaver is the original pattern. So if you want to make the squirrel you change the colors light yellow into white and brown into light brown. The tail description is mentioned in the pattern. Also the facing.

Greetings, AmiFan ©2020



Instructions

Rnd 7: 2sc, inc, 5sc, inc, (B) 6sc, (Y) inc, 5sc, inc, 2sc (28)

Rnd 8: 10sc, (B) 8sc, (Y) 10sc (28)

Rnd 9: 9sc, (B) 10sc, (Y) 9sc (28)

Rnd 10: 9sc, (B) 10sc, (Y) 9sc (28)

Rnd 11: (B) dec, dec, 20sc, dec, dec (24)

Rnd 12: (B)*dec, 2sc* crochet 6x (18)

Rnd 13: (B) *dec, 1sc* crochet 6x (12) Fill up and end off. Leave a thread for sewing the head on the body.



Head

You need: color brown (B) and yellow (Y). The color change is mentioned before the stitches Start with yellow.

Rnd 1: (Y) 6sc in magic circle (6)

Rnd 2: *inc* crochet 6x (12)

Rnd 3: 1sc, inc, 3sc, inc, 3sc, inc, 2sc (15)

Rnd 4: *4sc, inc* crochet 3x (18)

Rnd 5: 2sc, inc, 2sc, inc, 2sc, (B) inc, 2sc, (Y) inc, 2sc, inc, 2sc, inc (24)

Rnd 6: 9sc, (B) 6sc, (Y) 9sc (24)



Body

You need basic colors Brown (B) and Yellow (Y)

Rnd 1: 6sc in magic circle (6)

Rnd 2: *inc* herhaal 6x (12)

Rnd 3: *1sc, inc* crochet 3x, (Y) *1sc, inc* crochet 2x, (B), 1sc, inc (18)

Rnd 4: *2sc inc* crochet 2x, 2sc, (Y) inc, 2sc, inc, 2sc, inc (B), 2sc, inc (24)

Rnd 5: 3sc, inc, 3sc, inc, 1sc (Y), 2sc, inc, 3sc, inc, 3sc, inc, (B), 3sc, inc (30)

Rnd 6-12: (B)11sc, (Y) 14sc, (B) 5sc (30)

Rnd 13: *3sc, dec* crochet 3x, (Y), 3sc, dec, 3sc, (B) dec, 3sc, dec (24)

Rnd 14: *dec, 2sc* crochet 3x, dec, (Y) 4sc, (B) *dec, 2sc, dec (18)

Rnd 15: (B) *dec, 1sc* crochet 6x (12) Fill up and end off.



Leg front (2x)

Color brown. Crochet 2 front legs

Rnd 1: 6sc in magic circle (6)

Rnd 2 – 6: 1sc around (6)

Rnd 7: Do not fill up and fold together. Crochet dec 3x so the gap is closed. (3)

Attention, now crochet in rows and not in rounds!
Row 8 – 10: ch 1, turn, 1sc around (3)



Leg back (2x)

Attention. Left and Right leg are different only on round 5! Further they are both the same.

Rnd 1: 6sc in magic circle (6)

Rnd 2: *inc* crochet 6x (12)

Rnd 3: 1sc around (12)

Rnd 4: *dec, 2sc* crochet 3x (9) Attention: Now crochet in Rows!!

Rnd 5: Left leg: 3sc, 1 ch, turn. (3) Right leg: 1 ch, turn 5sc, 1ch, turn (5) Further the same again.

Rnd 6: inc, 3sc, inc, 1 ch, turn (7)

Rnd 7: 1sc, dec, 1sc, dec 1sc, 1ch, turn (5)

Rnd 8: dec, 1sc, dec (3) End off an leave a thread for sewing.



Ears (2x)

Crochet in brown.

Rnd 1: 6sc in magic circle (6)

Rnd 2: *inc* crochet 6x (12)

Rnd 3: Attention: * crochet 3 sc together* crochet 2x (8)

End off with slst and leave a thread for sewing.



Assembly

Sew the head on the body. Make sure the head is on the front side more pointing out than on the back. See picture.



Sew the two arms on the side... on the brown parts.
Sew the legs on the bottom.



Before sewing al together, fill up with a bit fiber fill.



Sew further on the body. This must look like this



Sew the ears on the head.



EYES AND NOSE

Squirrel nose > same brown as body Beaver nose > use white and black

Eyes

Sew with black first a little eye on Rnd 9. This is just on the brown thread. Get now white thread and sew two little white spots in the eye.



NOSE

Sew a nose. Make a first a figure how big you want your nose. Like the photo. Fill it up with sewing from the brown upper part down to the point. I used two threads together. At the end I sew right to left on the top.





The nose is ready.

Now a mouth.

SQUIRREL: Go from the middle off the nose, down, just over rond 1, in round 2. Than go slow in little stiches to the left up and to the right up. You made some cheeks.



BEAVER: Go under the nose A little bith to right and left, with black yarn. Not all the way up to the nose again. Make with white 2 teeth and with black thread you make them into 2.



TAIL BEAVER

This is only for the beaver! attention: Crochet from Rnd 3 in the inside loops of every stich. This is how you make a line on the tail.

Rnd 1: chain 5.

Rnd 2: Crochet 12sc around the chain 5. Like this figure. Start in the first ch of the crochet hook, 4sc, 3sc in the last ch, go further on the other side of the chain, 3sc, 2sc in last (or first) chain. (12)

Rnd 3: Crochet in the inside loops! 1sc around (12)

Rnd 4: *1sc, inc* crochet 6x (18)

Rnd 5: 1sc around (18)

Rnd 6: 1sc around (18)

Rnd 7: 1sc around (18)

Rnd 8: *dec, 1sc* crochet 6x (12)

Rnd 9: 1sc around (12)

Rnd 10: 1sc around (12)

Rnd 11: *dec* crochet 6x (6)

Rnd 12-13: 1sc around (6) End off and sew on the body.



TAIL SQUIRREL

Crochet all the rounds on the inside loops of every stich. This is how you make a line on the tail. You can crochet the loops on them later. That is what makes it look fluffy.

- R1. 6sc in magic circle. (6)
- R2. *inc, 1sc* crochet 3x (9)
- R3-4. 1sc around (9)
- R5. inc, 2sc* crochet 3x (12)
- R6-7. 1sc around (12)
- R8. *dec, 2sc* crochet 3x (9)
- R9-11. 1sc around (9) Fill up
- R12. *dec, 1sc* crochet 3x (6)
- R13. 1sc around (6).
- R14. Fold together and dec 3x (3)

Crochet now in both loops of the stiches.

- R15-17. Turn, 1ch, 3sc (3)

End off



MAKING LOOPS.

If you use fluffy thread or wool you can really make it fluffy. Repeat the following *Make a slsc with your thread, crochet chain 3, slst in a random next stich (not around) * Do this random, and go so on till you made your whole tail. Brush your tail.







Hints crochet amigurumi!

Amigurumi are always are crochet in a spiral (if not, it is mentioned in the pattern.

If you want to have a nice shape off the amigurumi you have to crochet as tight as possible, so you do not see the fiber filling between the stiches.

I always use cotton yarn suitable for the 2,5 or 3mm crochet hook. But I crochet with a 2mm crochet hook or smaller.

The colors on my patterns are just an example. Choose your own colors to make your own amigurumi.

I always use 100% cotton yarn except it is fluffy yarn.



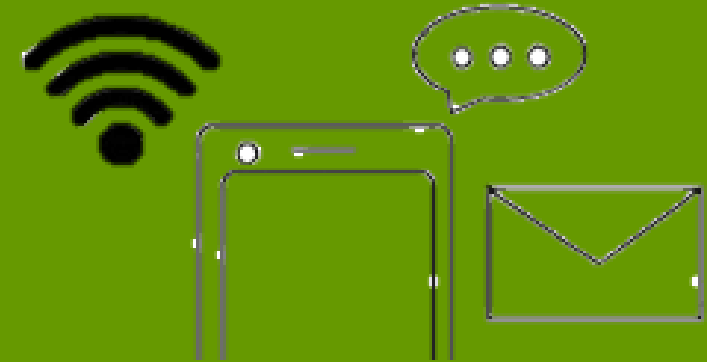
Who is AmiFan?

I am a Dutch designer off amigurumi since 2012. I started crochet in 2003 by watching You Tube and ready books about crochet. Soon I fall in love with the Japanese amigurumi. There were not a lot off crochet patterns in Dutch, so I decided to make my own and share them.

In 2012 I started a blog, in 2018 I moved my blog to : dutchamigurumi.wordpress.com

All my patterns are in Dutch. (Some, like this one, are also in English of German) And almost all off them are free gifts / downloads on my blog or Ravelry.

I also have patterns in magazines or on a website off a webshop. These are for sale or will be a free release later that year.



Instagram
@AmiFan01



Pinterest
@ Ami Fan



Ravelry
@ AmifanDutch



Blog
Dutchamigurumi.
wordpress.com