

# Mini panda

## Free pattern



AMIFAN



### Size crochet hook

- Hook 1,25 mm



### Yarn

Sock weight yarn (suggestion Lang Yarns Jawol) in white and black



### Materials

- Safety eyes 6 mm
- A pair of scissors;
- Polyester fiberfill for stuffin;
- Yarn needle;
- Stich marker;
- Pearl headed pins.



- Mijn patronen hebben verschillende moeilijkheidsgraden;
- Dit patroon is:  
Makkelijk **Gemiddeld** Moeilijk
- Dit patroon is geschikt voor een beginner.

## Terminology [US]

Chain [ch]  
Stitch/stitches [st]  
Magic ring  
Single crochet [sc]  
Half double crochet [hdc]  
Double crochet [dc]  
Increase [inc]  
Decrease [dec]  
Back loop[s] only [BLO]  
Slip stitch [sl st]  
Skip stitch

## Inhoud

Thank you, .....	2
Pattern .....	3
Instructions.....	3
Eye patches (2x) .....	3
Head.....	3
Ears (2x) .....	3
Body.....	3
Paws (2x) .....	3
Arms (2x) .....	4
Assembly .....	4

## Thank you,

For downloading this pattern!

This is a really tiny panda, if you use the same yarn and crochet hook as I did. Super cute and a great gift on a present or as a key chain.

Have fun and good luck with crochet

Greetings, AmiFan ©2020



# Pattern



## Instructions

*If you crochet this pattern with the same yarn and hook, it will be really tiny. If you choose to use other yarn and a bigger hook, it will be bigger. But still small.*

## Eye patches (2x)

Black yarn, crochet in rows

- Row 1 Crochet chain 3 and 1 chain to turn [4]  
Row 2 Crochet in the 2<sup>e</sup> stich from the hook, 2sc, 5sc in the same st (last one in the row),

crochet on the other side off the chain, 1sc, inc [10]

Row 3 1 ch, 3sc, \*inc\* crochet 3x, 3sc, inc [13]

Safety eyes through the hole on row 2, there where you made 5sc in one stich. [pic1]

## Head

Crochet with white yarn

- Rnd 1. 6sc in magic circle [6]  
Rnd 2. \*inc\* crochet 6x [12]  
Rnd 3. \*inc, 1sc\* crochet 6x [18]  
Rnd 4. \*1sc, inc, 1sc\* crochet 6x [24]  
Rnd 5. 1sc in every st [24]  
Rnd 6. \*inc, 3sc\* crochet 6x [30]  
Rnd 7. \*2sc, inc, 2sc\* crochet 6x [30]  
Rnd 8. 1sc in every st [36]  
Rnd 9. 1sc in every st [36]  
Rnd 10. 1sc in every st [36]  
Rnd 11. 1sc in every st [36]  
Rnd 12. 1sc in every st [36]  
Rnd 13. \*2sc, dec, 2sc\* crochet 6x [30]  
Rnd 14. \*3sc, dec\* crochet 6x [24]  
Rnd 15. 1sc in every st [24]  
Rnd 16. \*1sc, dec, 1sc\* crochet 6x [18]

Fill up the head. Place the eyes in the eye patches on the eyepatches on round 10.

Leave 4 stiches between the eyepatches.

- Rnd 17. \*dec, 1sc\* crochet 6x [12]  
Rnd 18. \*dec\* crochet 6x [6]

Close the gab.

## Ears (2x)

Crochet with black yarn

- Rnd 1. 6sc in magic circle [6]  
Rnd 2. \*inc\* crochet 6x [12]  
Rnd 3. 1sc in every st [12]  
Rnd 4. 1sc in every st [12]

Fold the ears and leave a yarn for sewing. [pic 2]

## Body

Use black and white yarn, start with black

- Rnd 1. 6sc in magic circle [6]  
Rnd 2. \*inc\* crochet 6x [12]  
Rnd 3. \*inc, 1sc\* crochet 6x [18]  
Rnd 4. 1sc in every st [18]  
Rnd 5. 1sc in every st [18]  
Rnd 6. Change color white. 1sc in every st [18]  
Rnd 7. \*dec, 1sc\* crochet 6x [12]  
Rnd 8. 1sc in every st [12]

Fill up the body and leave a yarn for sewing  
Do not close the gab.

## Paws (2x)

Crochet with white yarn

- Rnd 1. 5sc in magic circle [6]  
Rnd 2. 1sc in every sc [5]  
Rnd 3. 1sc in every sc [5]

End off, do not fill up and fold together and flatten them. Leave a yarn for sewing

## Arms (2x)

Crochet with black yarn

Rnd 4. 5v in magic circle [6]

Rnd 5. 1sc in every sc [5]

Rnd 6. 1sc in every sc [5]

End off and do not fill up. Leave a yarn for sewing.

## Assembly

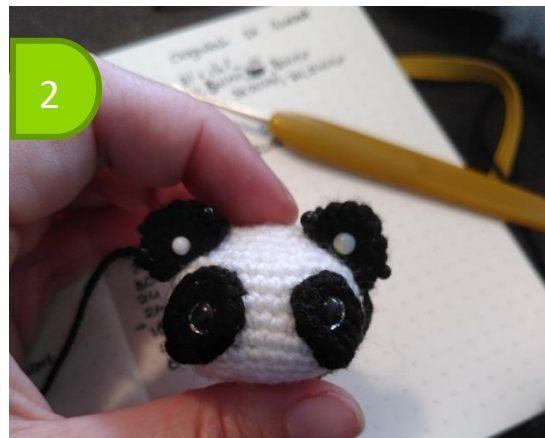
Sew all the parts together. Head on body first. Than the paws on the front side off the body. Sew the arms on the side off the body, in de black part.

Sew the eye patches with little stiches on the head. [pic2]

Sew with black yarn little nose (2st width)

Sew with black yarn a little tail on the back of the body [pic3]

Sew with black yarn on the paws little accents like they are real paws. [pic5]





## Haaktips voor amigurumi!

All the figures are crochet in a spiral (if not, it is mentioned in the pattern). If you want to have a nice shape off the amigurumi you have to crochet as tight as possible, so you do not see the fiber filling between the stiches.

I always use cotton yarn suitable for the 2,5 or 3mm crochet hook. But I crochet with a 2mm crochet hook or smaller.

The colors on my patterns are just an example. Choose your own colors to make your own amigurumi. That is why I do not mention the distributor off the yarn. Sometimes I want to give the amigurumi an extra twist (like fluffy hair), than I mention the yarn distributor. So you can achieve the same effect.



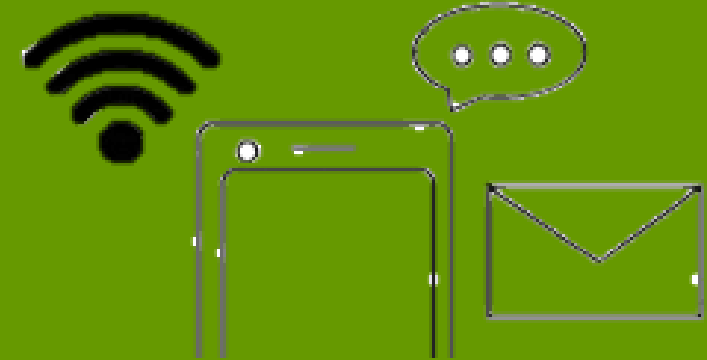
## Who is AmiFan?

I am a Dutch women and I like to design amigurumi. I started crocheting in 2003 and fall in love with the Japanese Amigurumi. Soon I started designing myself.

In 2012 I started a blog website and in 2018 I moved this blog to the following address: [dutchamigurumi.wordpress.com](http://dutchamigurumi.wordpress.com)

All my patterns are written in Dutch. Some are also in English like this one. My

patterns are free to download on my blog. Sometimes I publish on other websites or in magazines.



Instagram  
[@AmiFan01](https://www.instagram.com/AmiFan01)



Pinterest  
[@Ami Fan](https://www.pinterest.com/AmiFan)



Ravelry  
[@AmifanDutch](https://www.ravelry.com/people/AmifanDutch)



Blog  
[Dutchamigurumi.wordpress.com](http://Dutchamigurumi.wordpress.com)